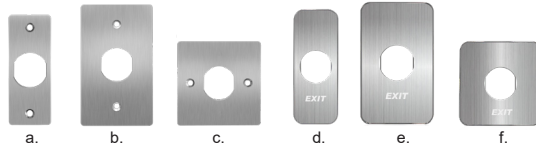


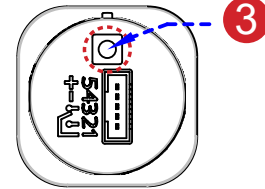
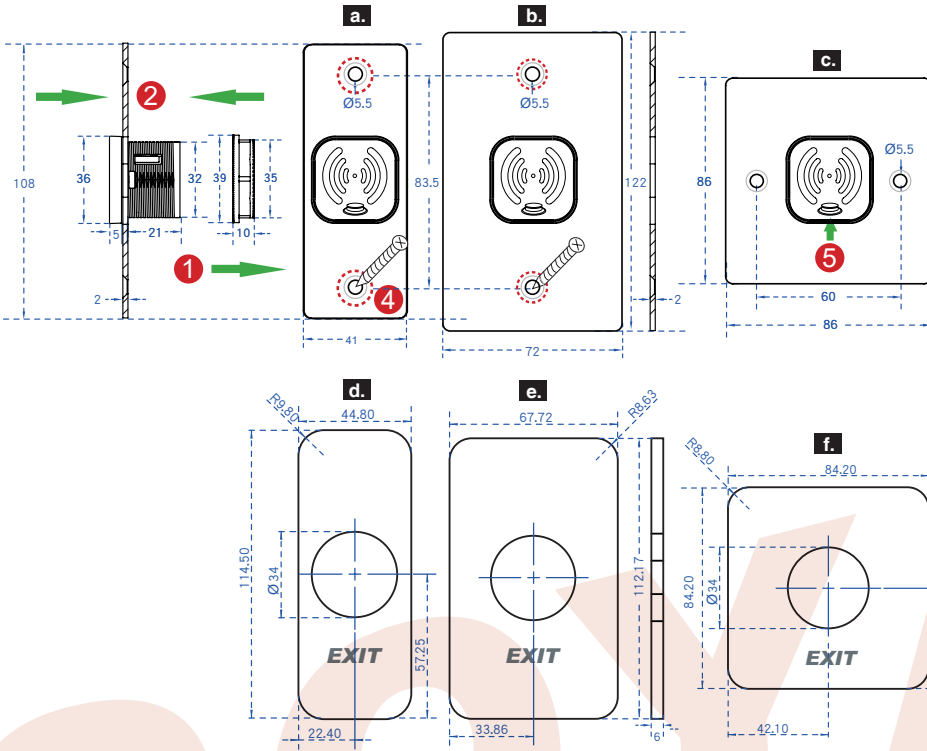
Installation



※ Two panel styles are optional



※ The shape of mounting plate is optional on demands.



Adjusting infrared detection range
Turn RIGHT: Longer / Turn LEFT: Shorter

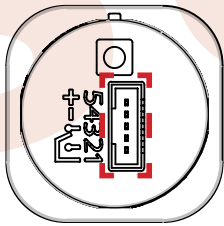
Installation:

- 1 Remove the black ABA Screw Nut from Button
- 2 Install Button to the selected mounting plate.
- 3 Adjust detection range of infrared sensor
- 4 Use a screwdriver to screw the mounting plate on the wall.
- 5 Paste the label sticker to finish installation.

Model:

- a. DMET-101PJ01 (Stainless steel plate)
- b. DMET-101PJ05 (Stainless steel plate)
- c. DMET-101PJ03 (Stainless steel plate)
- d. AR-PB-6A (plastic panel)
- e. AR-PB-7A (plastic panel)
- f. AR-PB-8A (plastic panel)

Connector Table



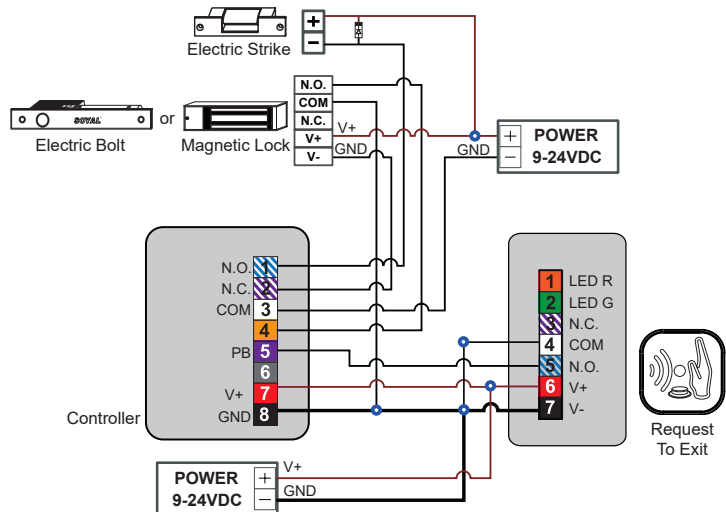
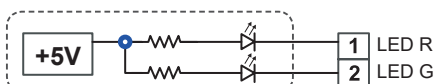
Wiring Diagram

*When POWER is not wired, AR-101-PBI-S become powerless, it can still open door by hard press it.

*When powering on, the sensing area could not be shielded to avoid affecting the sensing distance.

Function	Cable	Color	Description
LED R(Optional)	1	Orange	Red LED negative
LED G(Optional)	2	Green	Green LED negative
Relay	N.C.	3	Purple White DC24V / 1A
	COM	4	White DC24V / 1A
	N.O.	5	Blue White DC24V / 1A
Power	6	Red	DC 9-24V
	7	Black	DC 0V

Controller has built-in resistor and connected to +5VDC, external power supply current must be exceeding 20mA



* The Wiring Diagram of LED R/G Door Status Indication

Type A	The magnetic circuit will be turned on when getting closed to the switch. (closed circuit). The magnetic circuit will be turned off after removed the magnet. (open circuit) Double contact - NO. / COM
Type C	Trigger LED R when door open Trigger LED G when door closed Triple contact - NO. / NC. / COM

